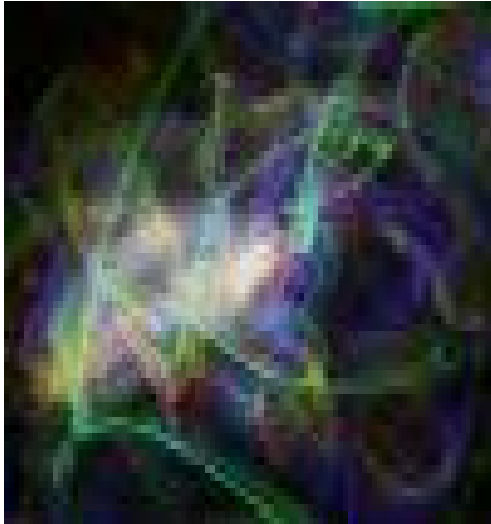


A central graphic of a golden-yellow Vitruvian Man figure is superimposed on a blue background with a hexagonal grid pattern. The figure is enclosed within a white circle and a white square. The figure's arms and legs are extended to touch the boundaries of the square and circle.

Nutri-Energetics Systems®

NES, Matching, and PCAR

Joan Parisi Wilcox, June 2008



“Ask anybody what the physical world is made of, and you are likely told matter and energy. Yet, if we have learned anything from engineering, biology, and physics, information is just as crucial an ingredient.”

Physicist Jacob D. Bekenstein

“Information may have a deeper reality than anything else in the universe, so that physics itself might be thought of not as the theory of energy and matter but as the theory of information.”

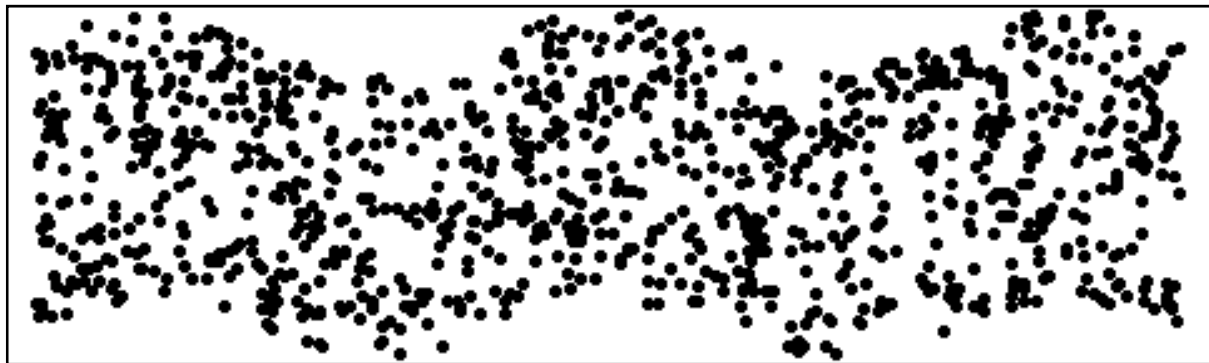
Physicist Anton Zeilinger



What Is a Wave?

Two characteristics of a wave:

- A physical wave is a disturbance or variation that moves through a medium and transfers energy.
- The energy moves, but the matter does not (in most instances).

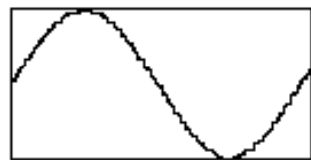


NOTE: Slide must be animated for movement to show.

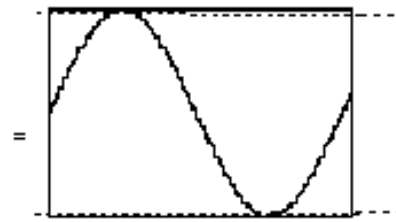
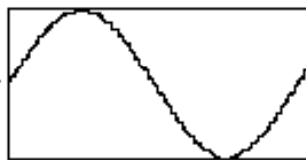
In wave motion, **phase** is the fraction of a complete cycle that has passed a fixed reference point since the current cycle began – for example, how many peaks of the wave pass a certain point in a given amount of time. The phase is often expressed as an angle, and a full cycle is 360 degrees.

- Two waves are "in phase" if the peaks of one wave align with the peaks of the other.
- Two waves are "out of phase" if the peaks of one wave align with the valleys of the other.

Effects of phase manifestation on amplitude.

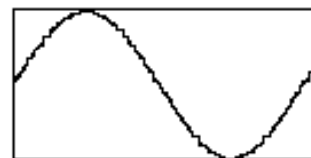


in phase waveforms

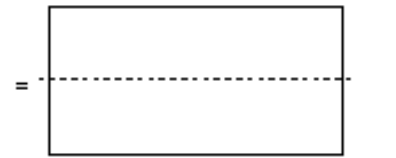


amplitude doubled

Constructive Interference



180 degree out of phase waveforms

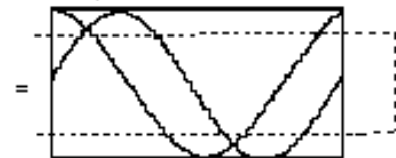


amplitude cancelled

Destructive Interference



90 degree out of phase waveforms



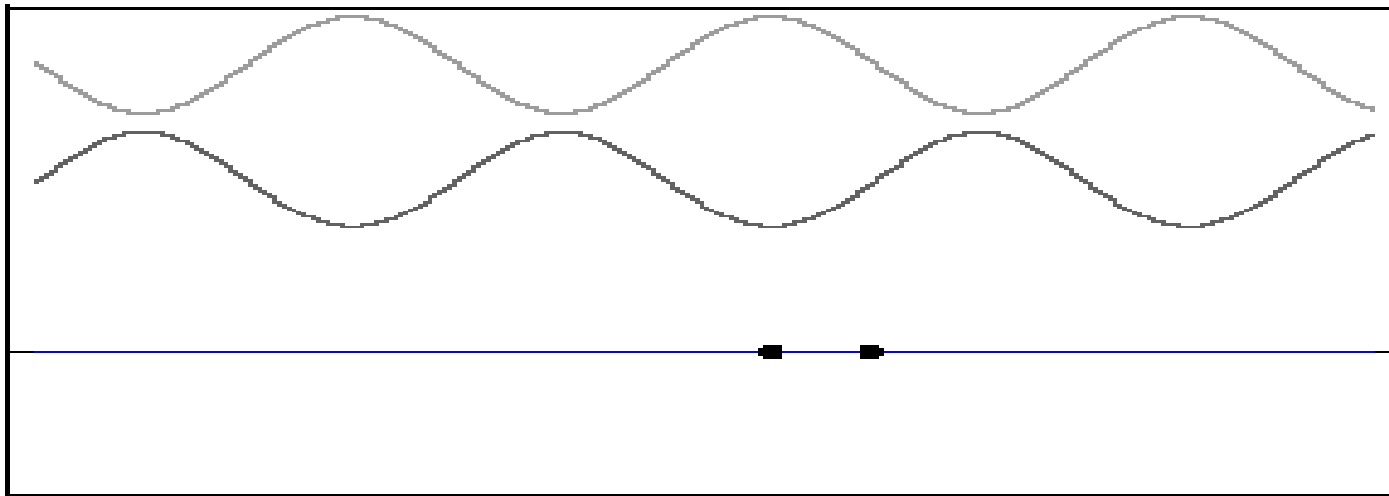
amplitude lowered

Peter's research shows the body-field especially "dislikes" a 90-degree phase error.

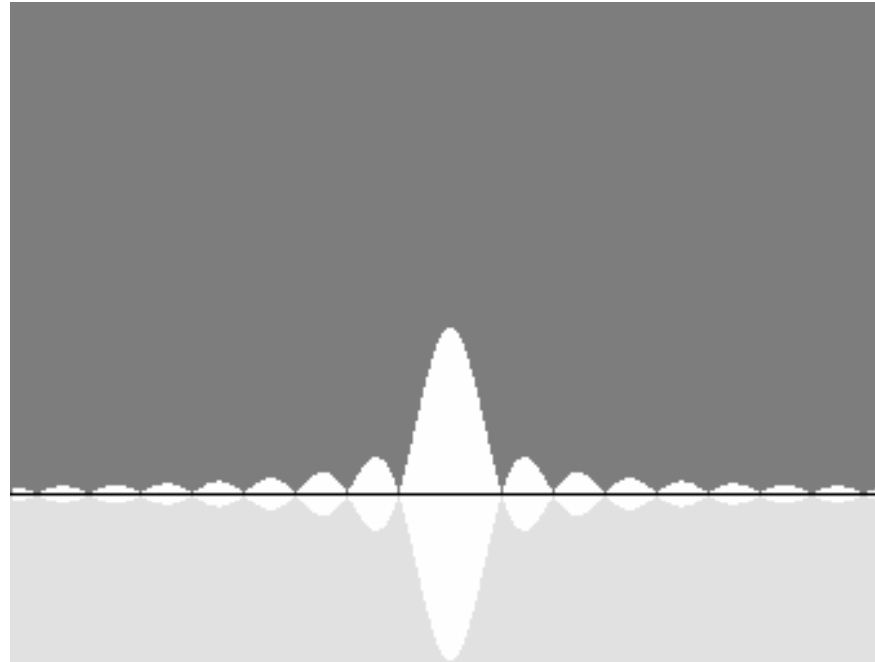
Based on the work of Louis de Broglie, who was studying how light could be thought of as both a particle and wave, and who received the Nobel Prize in Physics for his work on the wave-nature of the electron. David Bohm, in the 1950s, extended de Broglie's theory.

- De Broglie proposed that a particle may be “real,” but also always has a wave nature aspect, which he called a pilot wave. The pilot wave guides the particle through space and time.
- Bohm proposed that pilot waves/phase waves act as probes of the environment, changing shape instantly according to the conditions of the environment. This pilot wave field then “communicates” to the electron, which alters its characteristics (position or momentum) accordingly so that it conforms to what we expect it to in our experiments (showing either particle-like properties or wave-like properties) in the “real” macroscopic world.
- These phase waves can become entangled, meaning that every wave that has ever interacted with any other wave remains somehow connected to it and so they can “communicate” instantaneously. (They are “correlated” but not connected causally.)

Two counter-propagating traveling waves of the same frequency and amplitude superpose to form a standing wave. A standing wave remains in a constant position.



NOTE: Slide must be animated for movement to show.

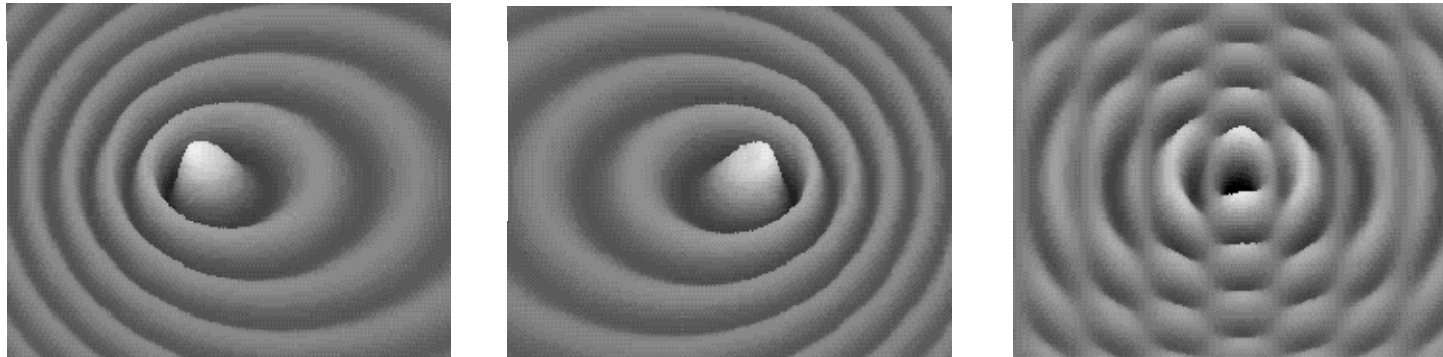


The animation above displays standing waves with a 3-D effect. Standing waves on water look like this, but electrons are actually ***spherical*** standing waves.

From www.glafreniere.com/sa_spherical.htm

NOTE: Slide must be animated for movement to show.

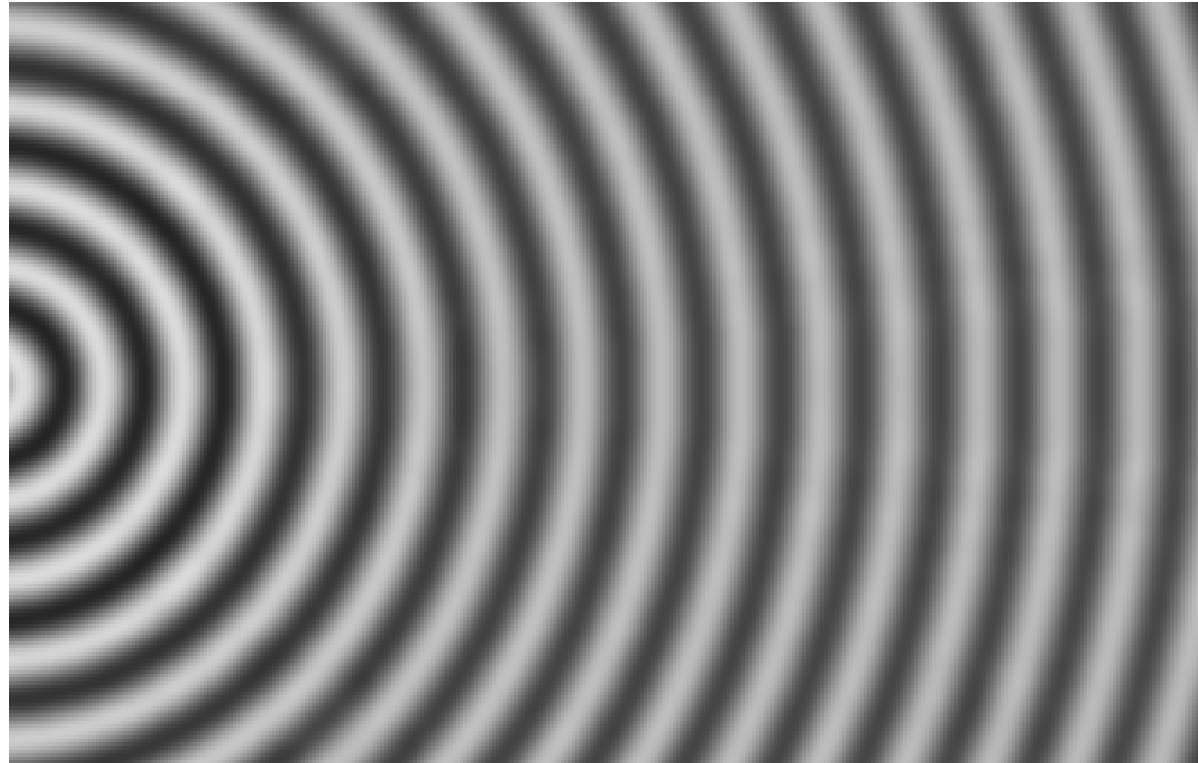
In the theory of Milo Wolff, and a few other frontier physicists, the electron (and other fundamental quantum particles) can be thought of as a **spherical** standing wave, although energy can move outward from it.



The moving electron undergoes the Doppler effect. Waves are not concentric any more, but they remain perfectly spherical. The wave addition reveals a stunning "phase wave," whose speed is given by: $1 / \beta$.

From www.glafreniere.com/sa_spherical.htm

NOTE: Slide must be animated for movement to show.



Standing waves progressively transform to traveling waves.

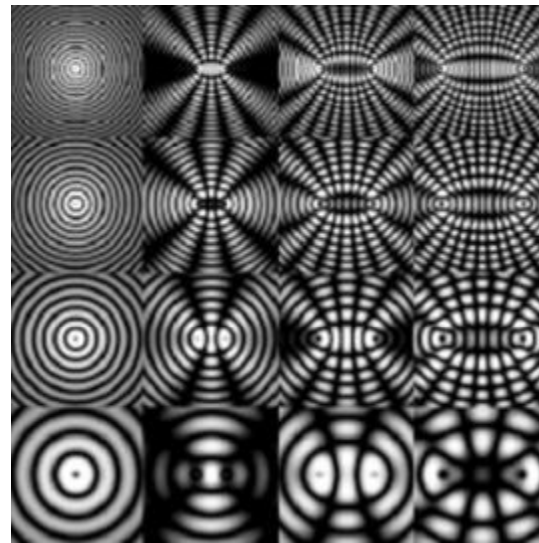
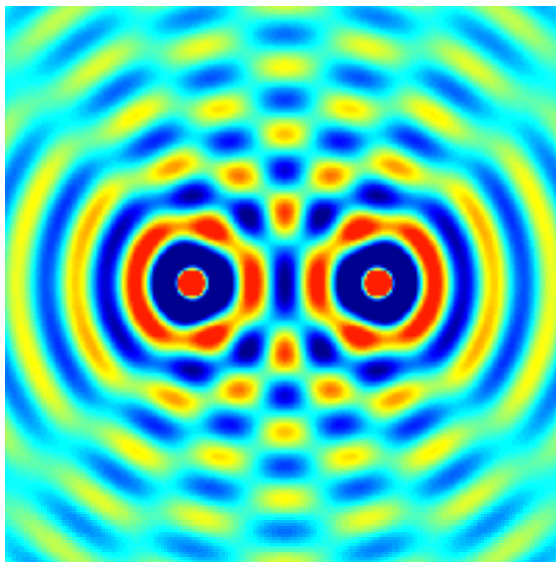
From www.glafreniere.com/sa_spherical.htm

NOTE: Slide must be animated for movement to show.

The NES “matching” experiments detect fields that can impart information to each other.

- You have to have an energy exchange to impart information.
- Information is imparted in the “interference pattern” (the banded dark and light areas) created between two waves/resonances.

Structure = Pattern = Information

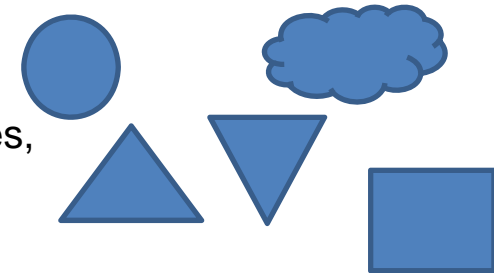


NOTE: Slide must be animated for movement to show.

Phase: The alignment (constructive or destructive) of two or more waves moving relative to each other and to a reference point.

Conjugate: Things that are alike or similar.

Similarity can depend on the context. All of these are geometric shapes, but some are rounded, some are pointed, etc., so their groupings as “conjugate” items can take many different forms, depending on the context, question or criterion.



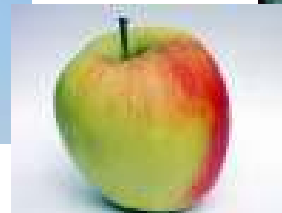
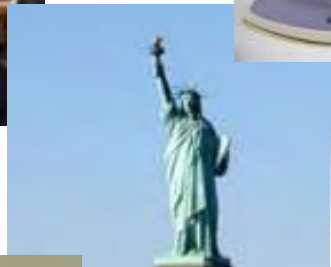
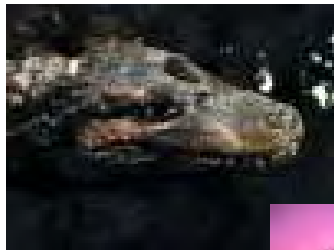
Adaptive: When two or more entities “respond” to each other; when information is exchanged that induces a cause-effect response.

Resonance: When two entities or systems vibrate in sync with each other. (Singer and a crystal goblet, two pendulums, etc.)

Theory proposed by physicist Peter Marcer and Walter Schempp, adopted by former astronaut and founder of the Institute of Noetic Sciences Edgar Mitchell, and applied to a holographic theory of consciousness.

Two Basic Premises:

- Every entity emits one or more phase waves.
- These phase waves carry the information that encodes that entity's unique and identifiable characteristics.

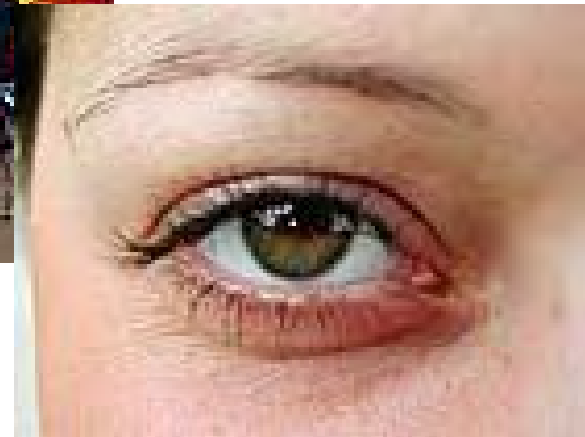




At a conscious level, we receive more than 2 million bits of data through our five senses every second! We filter most information out, sending hundreds of billions of additional bits of information to our unconscious mind.



Attention



Intention

Attention + intention = extraction of greater amounts of information.



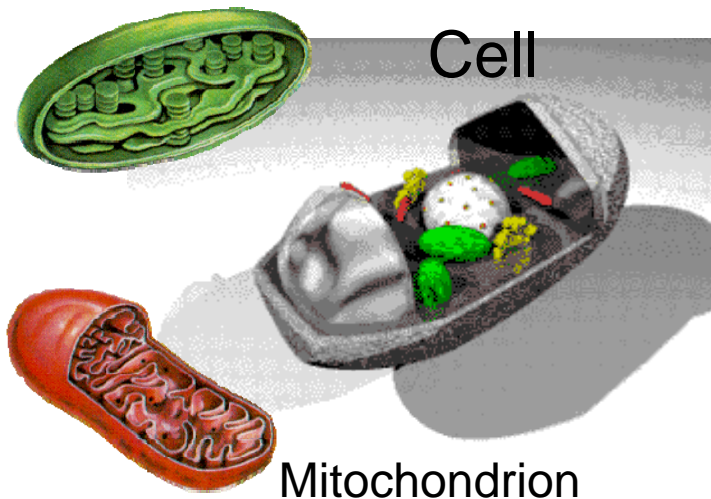
Schempp and Marcer propose that DNA—each pair of the nucleotides that contain the genetic instructions (A, C, G, T)—encodes a diffraction pattern, which is a image of a wave that holds the informational patterns of the shape of that organism at that moment in time.



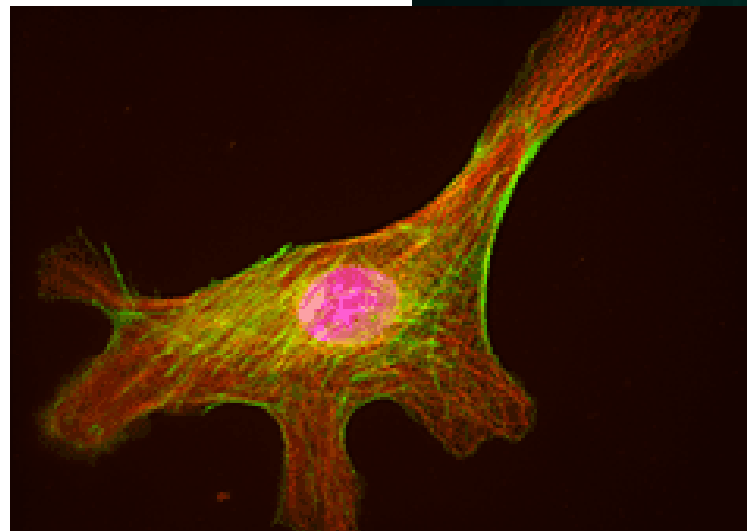
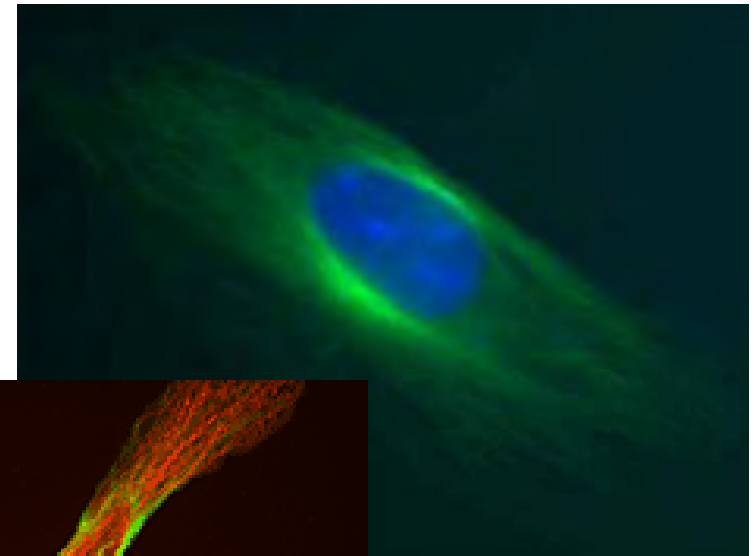
Human DNA can be thought of as “a stack of . . . millions of CDs with information on them sufficient to generate you.” In NES, this relates to the layers of the body-field.

Marcer and Schempp propose that DNA is a type of resonating cavity that can “read” the data encoded in phase waves but can also convert that information into a form that can be distributed to and used by genes throughout the physical body. They propose a new concept of a biological information wave, rather like a radio wave that broadcasts throughout the body.

Chloroplast



Actual photos of microtubules around the nucleus of a cell



The body is full of cavities at all levels of structure, even at the below-cell level.

The human body and body-field are composed of myriad information fields in the form of phase waves, which carry information about systems and subsystems.

The waves are constantly updating the information they carry from input via feedback loops from internal and external environments.

As the information the waves carry changes, so does body-field dynamics, and eventually so does the physical body, which is dependent on that information.

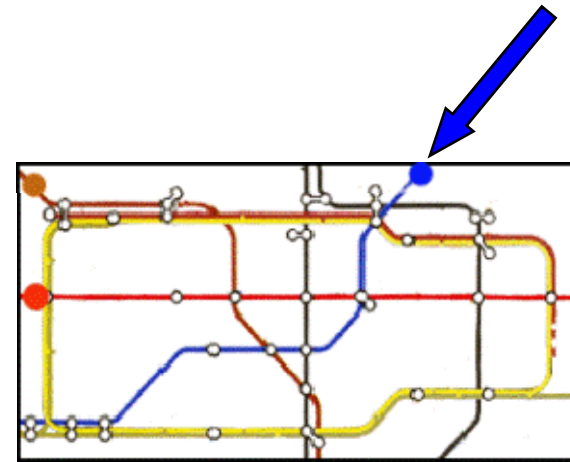
Encoding, imprinting, and regulation of information happens through myriad routes: lipids, breathing/gas exchange in lungs, connective tissue matrix, etc.



The EIs are “structures in space” that act as information “highways” in the body-field.

Think of each EI as a large space resonance that contains within it smaller conjugate information “entities” that share adaptive resonances among themselves and particular aspects of the body.

EI 1: brain/nervous system/spinal nerves/motor neurons/large intestine/dermis layer of skin/bronchi/bone marrow, etc.

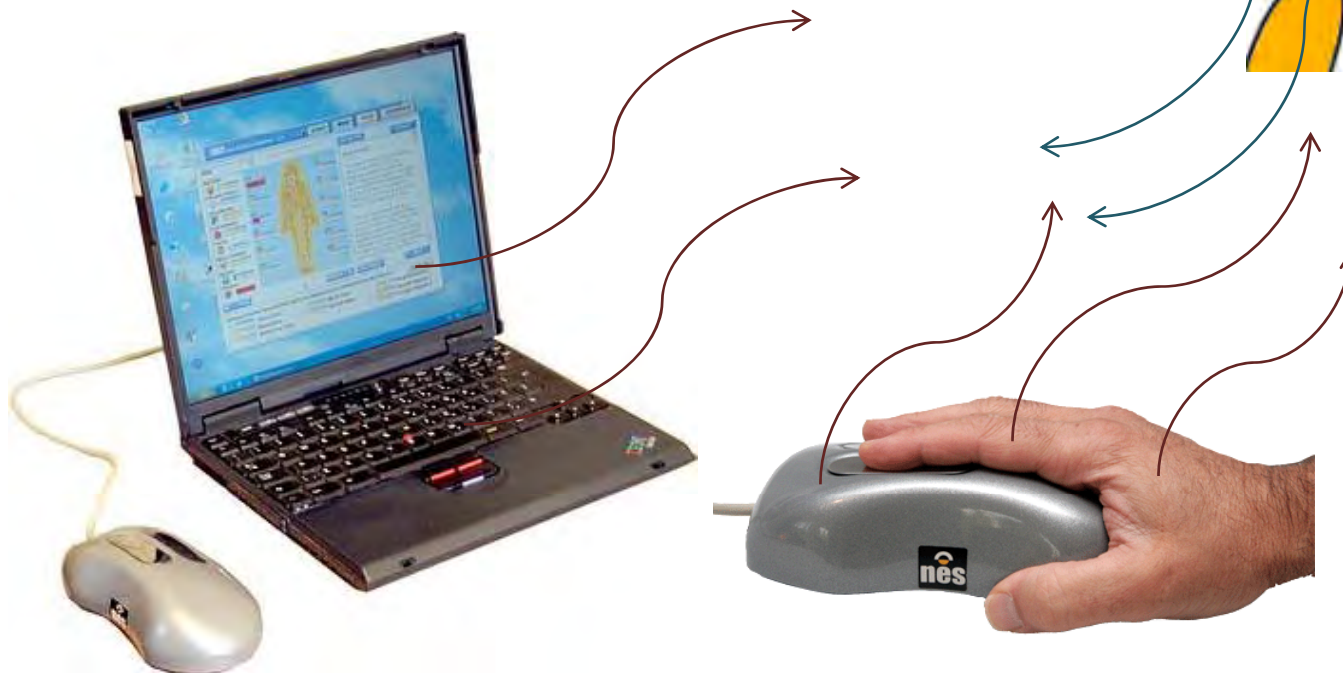
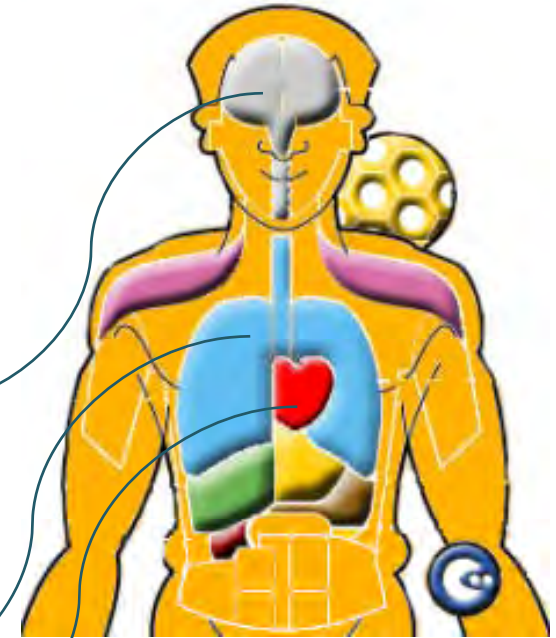


Each Integrator forms a route map for information exchange. Each “route” represents specific body regulation processes that otherwise might seem unconnected.

We correct *the entire Integrator structure*, not the individual items within each Integrator.

“Reading” the Body-Field

- Focused attention and intention of client and practitioner
- Information encoded in NES software (theory to interpret, sort and prioritize information)
- Technical conditions (electrostatic field, light, gravity, magnetism, etc.), and physics (entanglement, PCAR)
- Information carried via the phase waves and exchanged via PCAR.

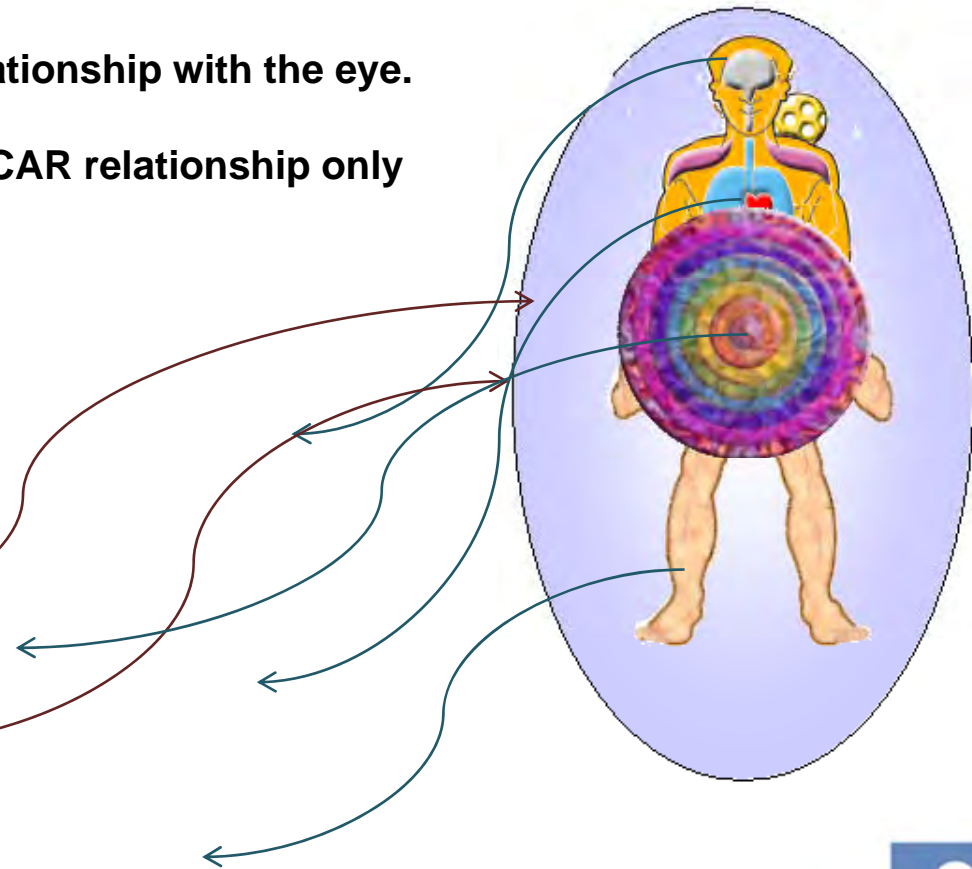


Peter's matching experiments can be thought of as PCAR relationships between the phase wave of a substance (tissue, mineral, element, cell type, microorganism or their energetic analogues) and the phase wave of a system or subsystem of the body-field and physical body. He is able to discern correlations at incredible levels of detail.

TCM: Liver meridian in general PCAR relationship with the eye.

NES: Liver information field in specific PCAR relationship only with the iris and retina.

Infoceuticals can be thought of as encoding phase wave information.



**Nutri-Energetics Systems:
Pioneering Biophysics,
Revolutionizing Healthcare**

